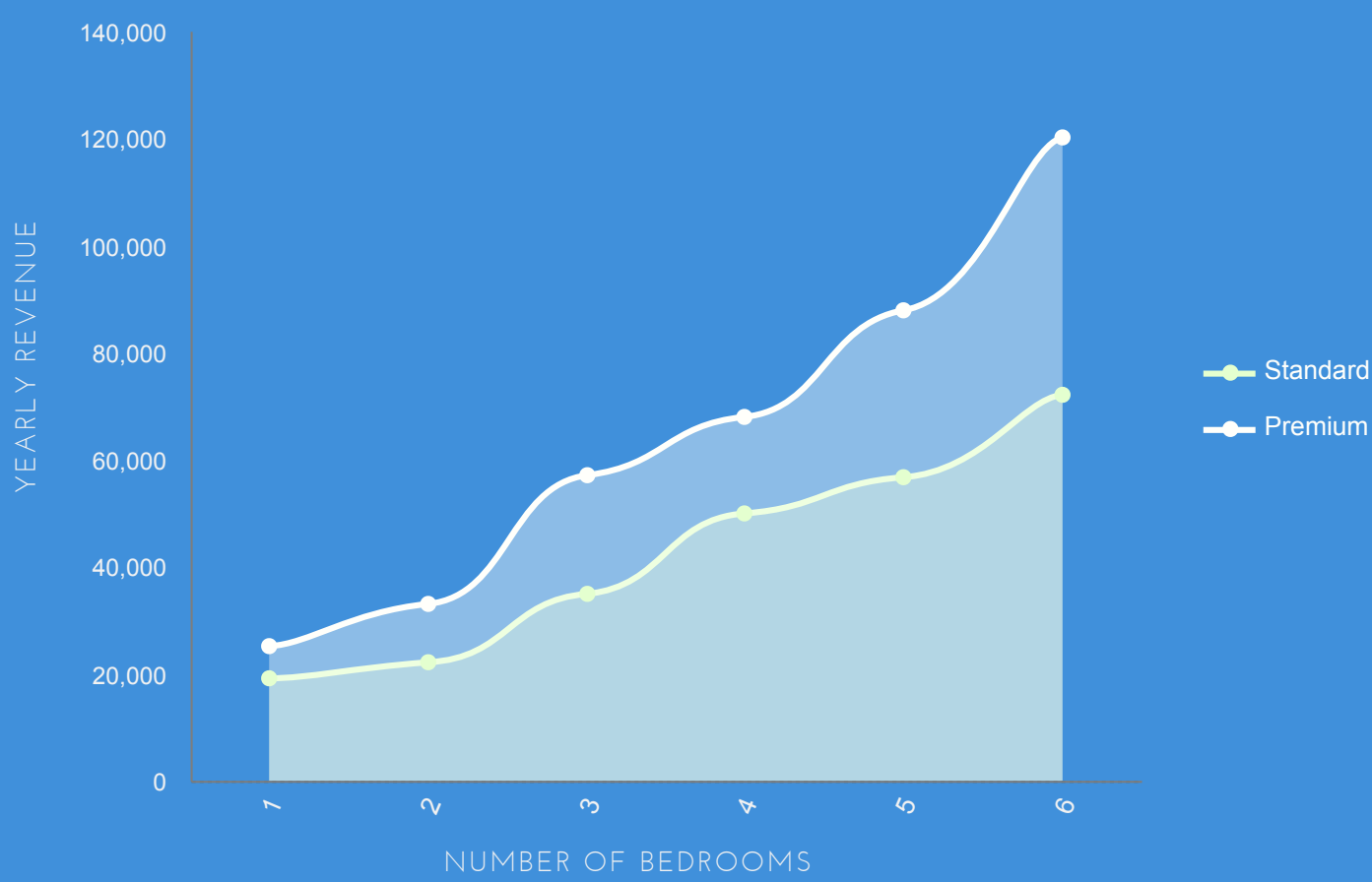


2018 Vacation Lodging Report

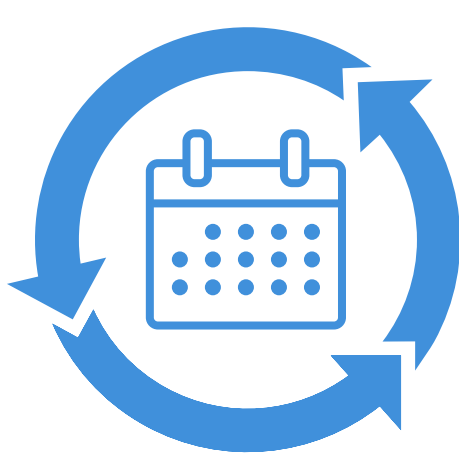
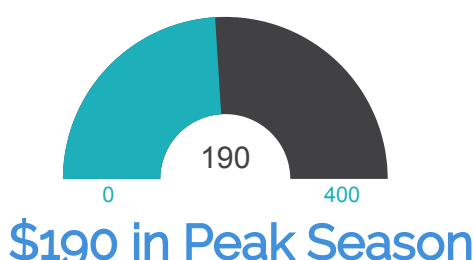
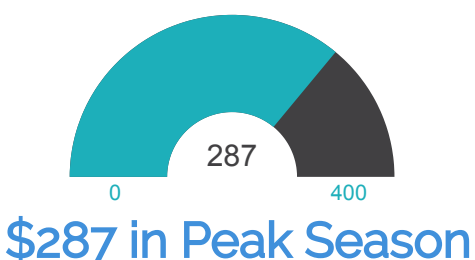


YEARLY REVENUE BY CABIN SIZE

in 2018



Average Daily Rate



**Average Booking Window
56 Days**



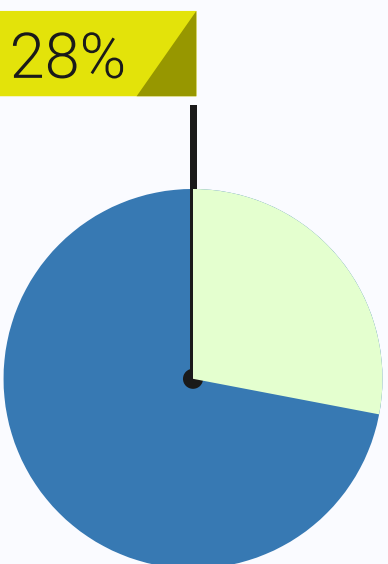
Have questions or want to get started?

1.800.547.0948

SummitCabinRentals.com/list-your-cabin/

Data is taken from a sampling of approximately 2,250 properties in Sevier County. Source: KeyDataDashboard.com

# of Beds	Occupancy % Range	Nightly Rate
1	57%	\$138
2	51%	\$171
3	48%	\$242
4	48%	\$330
5	52%	\$433
6	51%	\$538



REPEAT GUEST %
28% Of Guests that stayed with Summit Cabin Rentals in 2018 have stayed with us before.



Have questions or want to get started?

1.800.547.0948

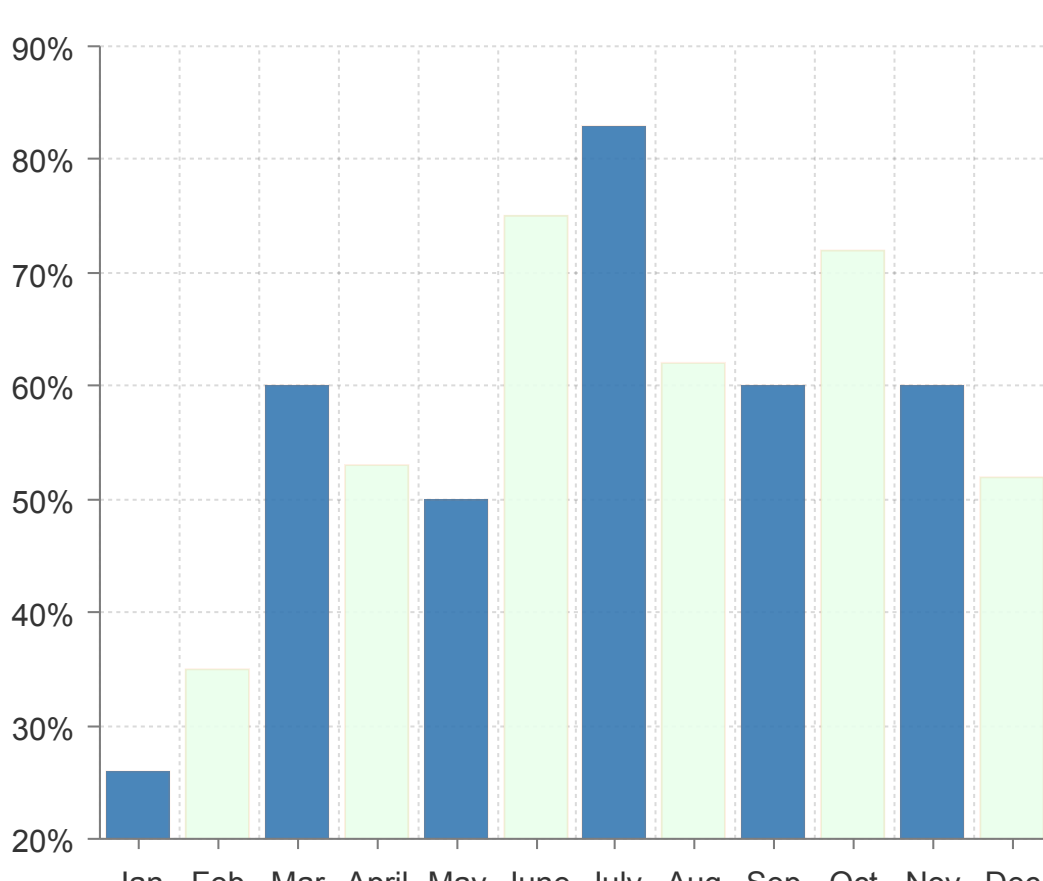
SummitCabinRentals.com/list-your-cabin/

Data is taken from a sampling of approximately 2,250 properties in Sevier County. Source: KeyDataDashboard.com

AVERAGE LENGTH OF STAY



Occupancy By Month (2018)



Have questions or want to get started?

1.800.547.0948

SummitCabinRentals.com/list-your-cabin/

Data is taken from a sampling of approximately 2,250 properties in Sevier County. Source: KeyDataDashboard.com